

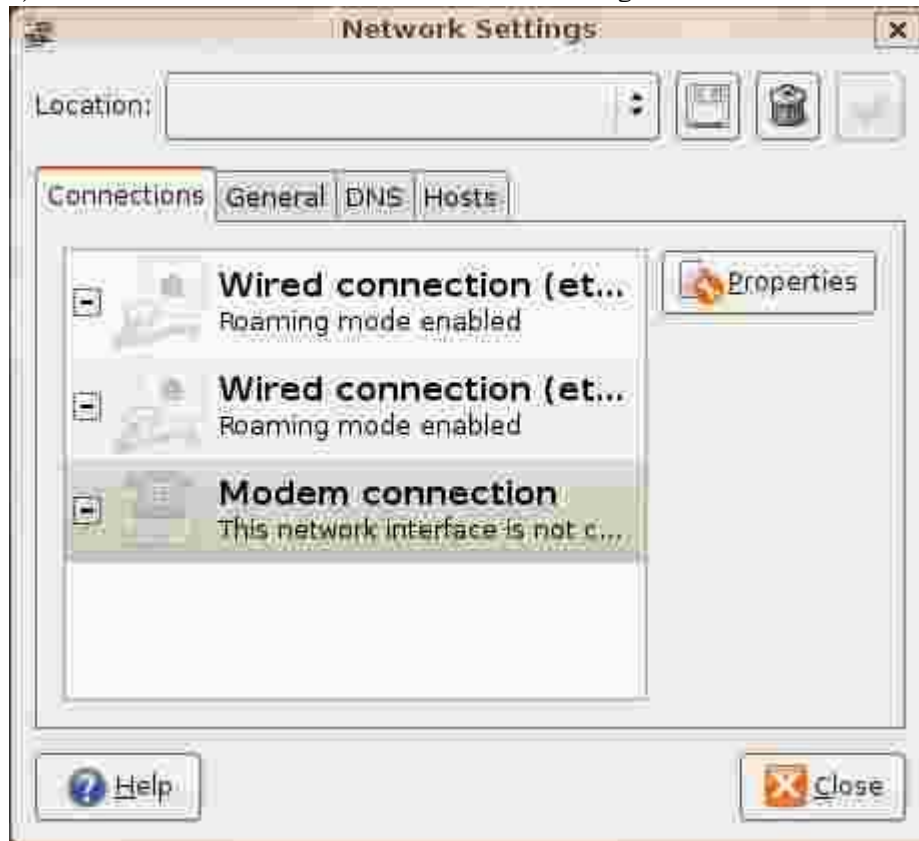
1. Type in the following command in Terminal for APN setting

```
echo "at+cgdcont=1,\"IP\", \"Internet\"" > /dev/ttyUSB1
```

(Internet is one APN for example, pls type in APN of your operator instead of Internet)

1) Open from the menu "System->Administration->Network"

2) Check the modem connection from "Network Settings->Connections->Modem connection"



3) Click the "Properties" for BandLuxe settings

3.1) In tab "General",

Check "Enable this connection"

Phone number: \*99#

Fill in your username and password too... (if no username/password required, just type something which ubuntu does not allow a blank field)

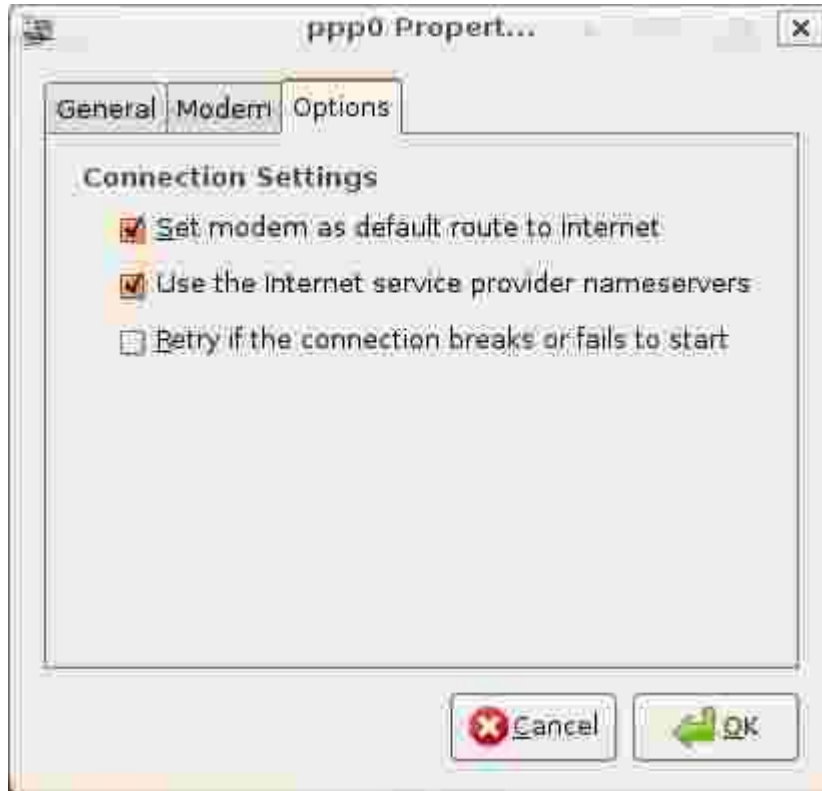


- 3.2) In tab "Modem",  
Type in the Modem port: /dev/ttyUSB1



- 3.3) in tab "Options",  
Check "Set modem as default route to internet"  
Check "Use the internet service provider namervers"

Check "Retry if the connection breaks or fails to start"



4) Ubuntu will do the connection automatically.

5) The Green (3G) or Blue (3.5G) led will lit on continuously if the connection is successfully connected.